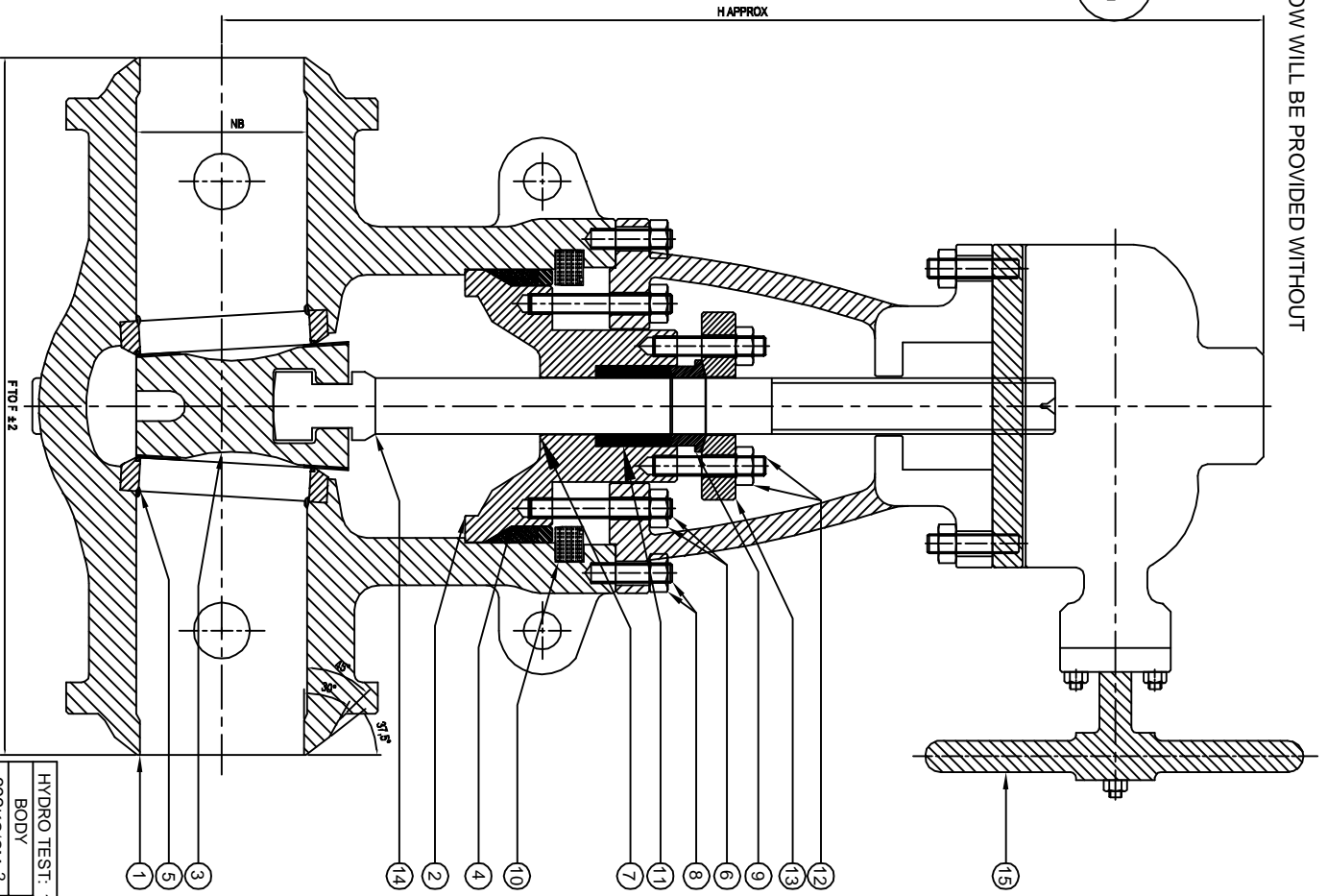


NOTE :-
100mm AND BELOW WILL BE PROVIDED WITHOUT
GEAR BOX.

10




P.NO	PART NAME	MATERIAL
1	BODY	ASTM A-216 Gr. WCB CAST STEEL
2	BONNET	ASTM A-216 Gr. WCB
3	WEDGE	A 216 WCB with 13% Cr. STEEL FACING
4	GASKET	DIE MOULDED GRAPHOLITE
5	SEAT	A 105 + 13% Cr. FACING
6	STUD / NUT	ASTM A 193 Gr. B7 / A 194 Gr. 2H
7	BACK SEAT	ST 6 (INTEGRAL)
8	BODY STUD / NUT	ASTM A 193 Gr. B7 / A 194 Gr. 2H
9	GLAND	ASTM A 193 Gr. B7 / A 194 Gr. 2H
10	SEGMENTAL RING	ASTM A 193 Gr. B7 / A 194 Gr. 2H
11	GLAND PACKING	F 6 <small>GUARANTEED LUBRICATED NON-ASBESTOS IMPERMEATED WITH SACRIFICIAL INCOLOY WIRE</small>
12	GLAND BOLTING	ASTM A193. Gr. B7 / A194 Gr.2H
13	GLAND FLANGE	CARBON STEEL
14	STEM	ASTM A 193 Gr. B7 / A 194 Gr. 2H
15	GEAR BOX	HEAVY DUTY STANDARD MAKE

NOTE :-
MATERIAL GIVEN IN TABLE IS FOR REFERENCE ONLY.
OTHER MATERIALS LIKE CARBON STEEL, LOW CARBON STEEL, ALLOY STEEL,
STAINLESS STEEL, DUPLEX STEEL, SUPER DUPLEX STEEL, ALLOY 20, MONEL,
INCONEL, HASTELLOY, COPPER ALLOY AVAILABLE AS PER SERVICE REQUIREMENT.

Size	NB	F to F	H
50mm	47	216	455
65mm	57	254	500
80mm	70	305	515
100mm	92	406	700
150mm	136	559	985
200mm	178	711	1200
250mm	222	864	1275
300mm	263	991	
350mm	289	1067	
400mm	330	1194	1800
450mm	371	1346	
500mm	416	1473	
600mm	498	1943	2700

ENGINEERING DATA	
DESIGN CODE	API 600 / ASME B 16.34
FACE TO FACE	ASME B 16.10
END CONNECTION	ASME B 16.5 BUTT WELD END
INSPECTION & TESTING	API 598

HYDRO TEST: 1500#			
BODY	SEAT	BACK SEAT	AIR TEST SEAT
392KG/CM 2	287KG/CM 2	287 KG/CM 2	07 KG/CM 2

DRN.: B.M.P	 Industrial Valves
CHK.: V.G.P	
APRD.: S.K.P	GATE VALVE FLANGED ENDS, 1500#
DATE: 01.04.19	
SCALE: NTS	DRG NO.: NC/GTY/BW/PR/1500/50-600